



# Lebanon National Operations Room

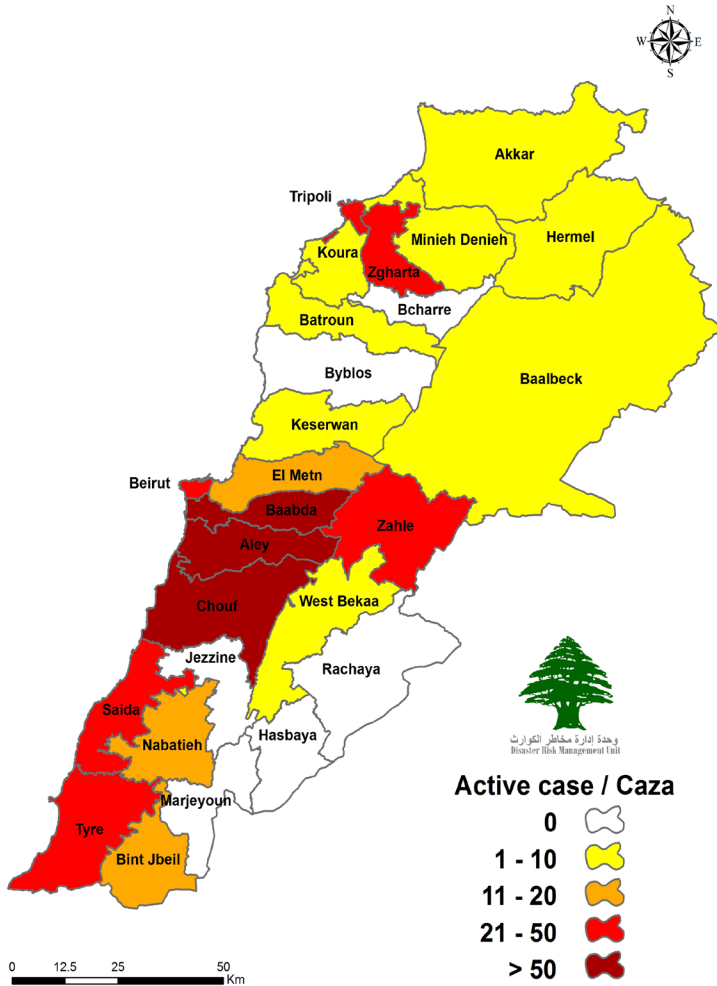
## Daily Report on COVID-19

Tuesday, June 30, 2020

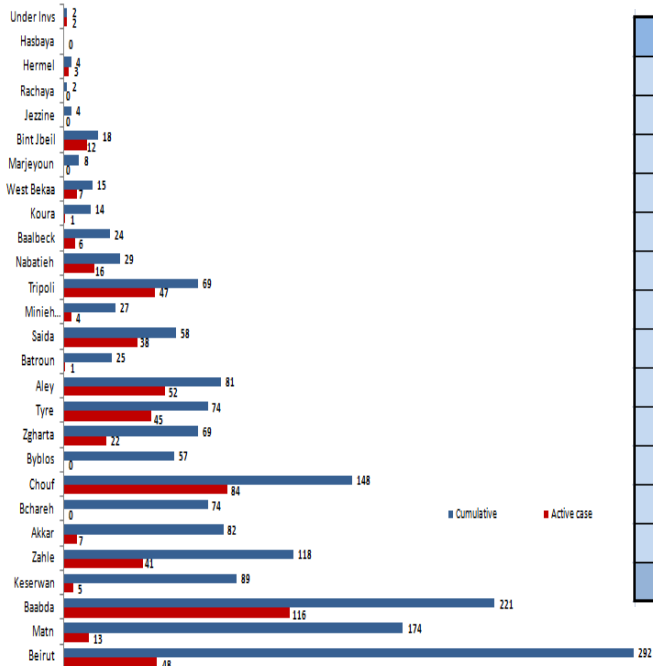
Report #104

Time published: 18:00

### Number of Cases by Location



#### Active case / Caza



|  |         |
|--|---------|
| Total registered cases since Feb. 21                                 | 1778    |
| locals   | 1226    |
| Lebanese expats  | 552     |
| Recoveries   | 1174    |
| Deaths   | 34      |
| Total registered cases in the past 24 hrs.                           | 33      |
| locals   | 27      |
| Lebanese expats  | 6       |
| Conducted PCR tests in labs since Feb. 21                            | 132,199 |
| PCR tests conducted in the last 24 hrs. (in labs and in the airport) | 2971    |
| <b>570 active cases</b>  |         |
| 544 in home isolation  |         |
| 26 are currently hospitalized  |         |
| 20 mild cases  |         |
| 6 in ICU   |         |

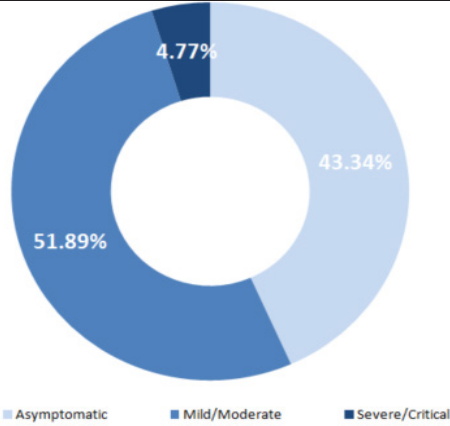
| Municipality                 | Number of cases | Local/Expat |
|------------------------------|-----------------|-------------|
| Borj El Barajneh (Baabda)    | 7               | Local       |
| Ouzaii (Baabda)              | 2               | Local       |
| Hadath (Baabda)              | 4               | Local       |
| Mrayjeh (Baabda)             | 1               | Local       |
| Bchara El Khoury (Beirut)    | 1               | Expat       |
| Werdeniye (Chouf)            | 1               | Local       |
| Kayfoun (Aley)               | 1               | Local       |
| Mina (Tripoli)               | 4               | Local       |
| Abde (Akkar)                 | 1               | Local       |
| Majdal Anjar (Zahle)         | 4               | Local       |
| Kawthariyat El Seyed (Saida) | 1               | Expat       |
| Tyre (Tyre)                  | 4               | Expat       |
| Under Investigation          | 2               | Local       |
| <b>Sum</b>                   | <b>33</b>       |             |

## Comparison between Lebanon and other countries

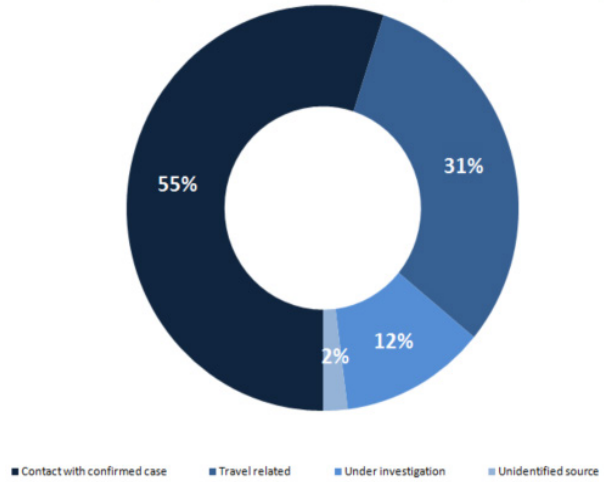
|                               | Lebanon      | Internationally   |
|-------------------------------|--------------|-------------------|
| <b>Total registered cases</b> | <b>1778</b>  | <b>10,449,330</b> |
| <b>Total deaths</b>           | <b>34</b>    | <b>509,113</b>    |
| <b>Percentage of deaths</b>   | <b>1.91%</b> | <b>4.87%</b>      |
| <b>Number of recoveries</b>   | <b>1174</b>  | <b>5,705,460</b>  |

\*the above data was last updated at 5 pm

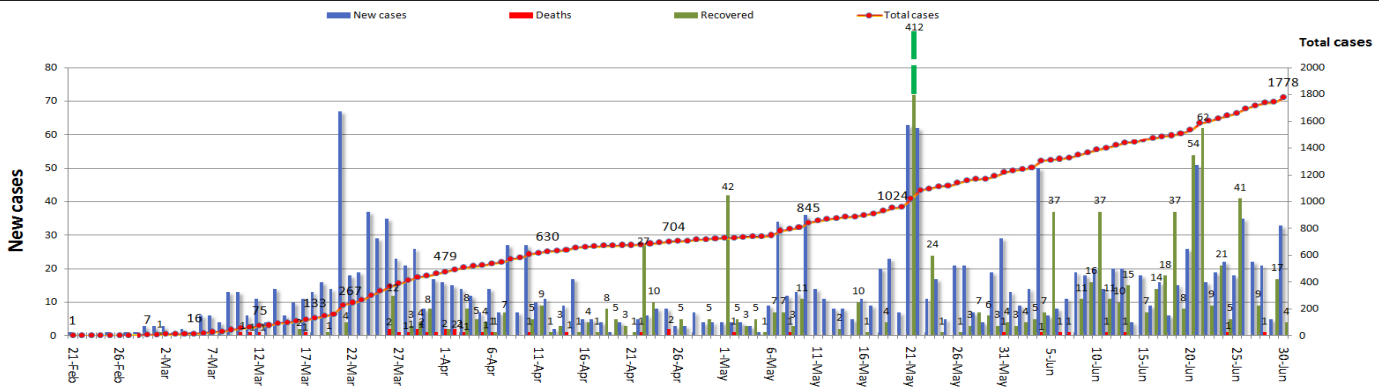
### Status of cases



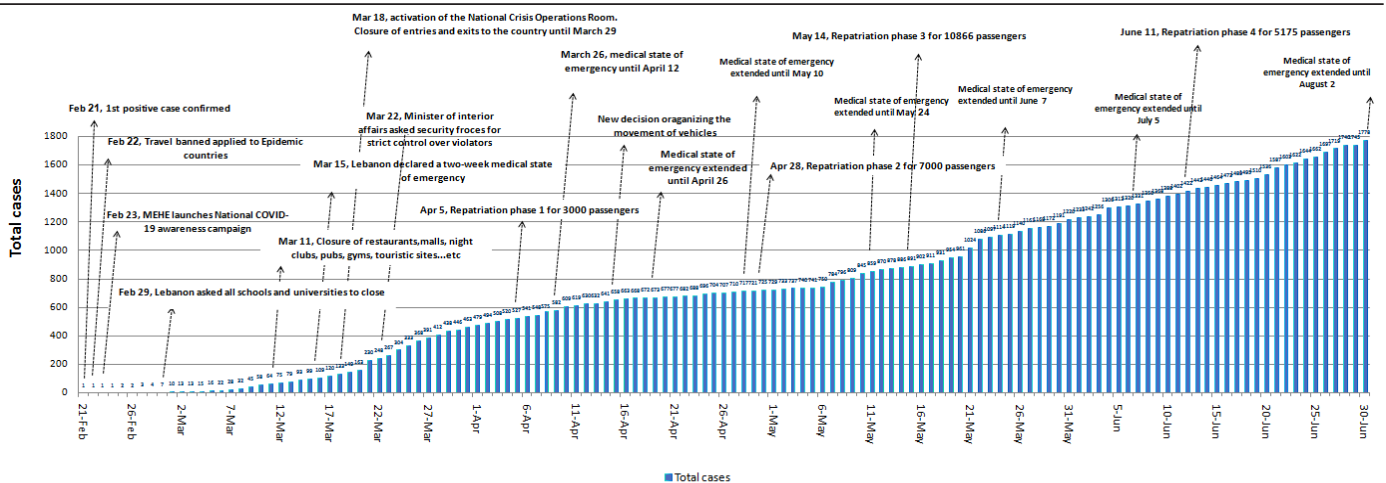
### Exposure



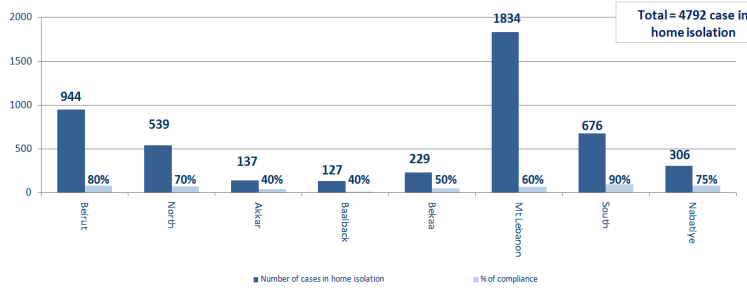
## Cases per day



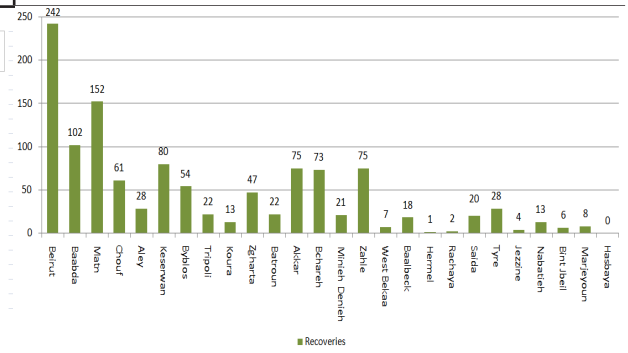
## Chronology of decisions according to number of cases



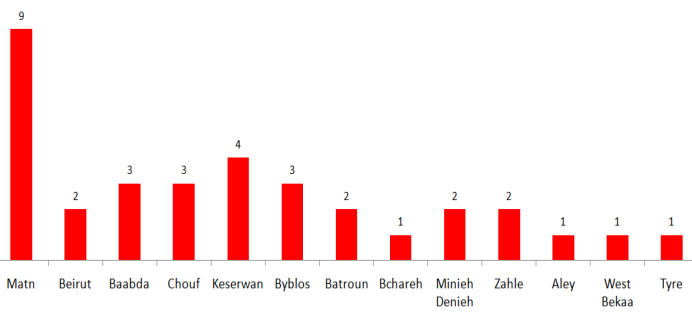
## Number of individuals in home isolation and percentage of commitment to isolation



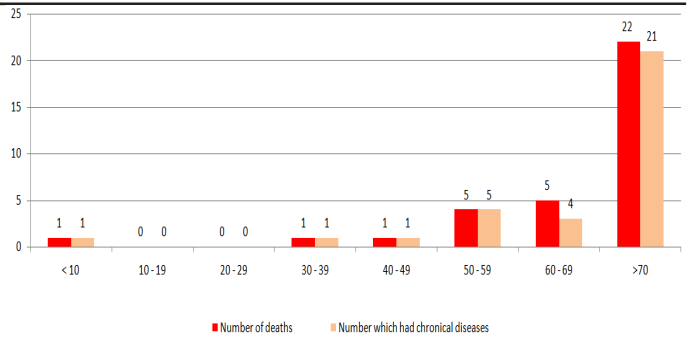
## Distribution of recoveries by area



## Distribution of deaths by governorates

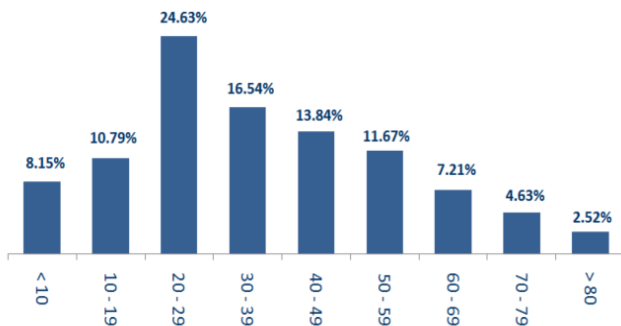


## Distribution of deaths by age



## Distribution of cases by age group

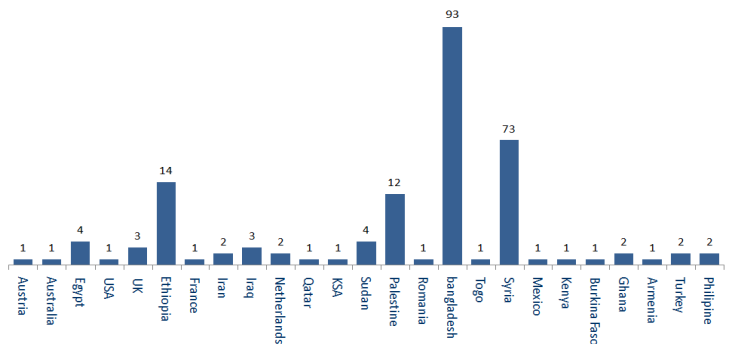
### Distribution of cases by age group (%)



## Distribution of cases by nationality

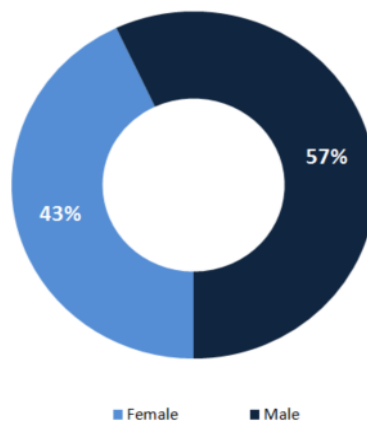
### Distribution of cases by nationality

Lebanese: 1517 cases out of 1778 (87%)



## Distribution of cases by gender

### Distribution of cases by gender (%)



## Examples of lack of adherence of safety measures

- Demonstration, and Roadblocks
- Violations of curfew, and the medical mask decisions
- Failure of commercial stores, supermarkets, and others to comply with the closing hours
- Overcrowding in restaurants and cafes and failure to comply with the permitted number of customers (50%)
- gatherings in front of banks, money transfer offices and ATM machines without maintaining a safe distance or putting masks
- Gathering of citizens in hiking areas without committing to preventive measures
- Non-compliance of citizens with preventive measures in food markets
- Gathering in cafes
- hookah
- gatherings on beaches and sidewalks without wearing masks.
- social gatherings and celebrations and kids areas

**LET'S STAY COMMITTED SO IT IS REMEMBERED BUT NOT REPEATED...**

**Physical Distancing**

- Keep a safe distance
- 1.5 meters at least

**Hygiene**

- Wash your hands for at least 20 seconds
- Sterilize your purchased products before use or storing at home

**Prevention**

- Wear face masks outside the house
- Avoid touching the face
- Cover mouth and nose with elbow when coughing or sneezing

Adhere to all circulars by the Ministry of Public Health

## Decisions and actions taken

### Ministry of Public Health

- The ministry issued circular nb 99 on 30/6/2020 stating the specific regulations that should be followed by those arriving to Lebanon starting July 1
- The ministry continues to support public hospitals through providing them with the necessary medical tools.
- The Ministry is visiting areas where the pandemic has spread to follow up on the implementation of isolation and is following up with Lebanese who have recently returned to Lebanon.
- The ministry supervises all the conducted PCR tests for those who were in contact with positive cases in various government hospitals, at the expense of the ministry in order to determine the epidemiological reality in Lebanon and take the necessary steps.

### Lebanese Red Cross

|                   |   |                   |   |                |  |                  |  |
|-------------------|---|-------------------|---|----------------|--|------------------|--|
| 26833<br>new 137) | Number of PCR tests transferred to laboratories   | 0                 | Number of additional ambulance centers ready to respond               | 47             | ambulance centers  | 2351<br>(new 16) | cases transferred to hospitals                     |
| 166               | Number of volunteers trained to transfer PCR tests  | 1444              | Number of trained paramedics  | 7925<br>new 19 | total number of respondents  | 62186<br>new 86) | number of those benefiting from awareness sessions |
| 967               | The number of university volunteers trained to follow up on prevention measures in companies and institutions | 217               | Number of university volunteers trained to conduct awareness sessions | 550            | total LRC volunteers for covid19                                       | 6794<br>new 19)  | number of trained managers for isolation centers   |
| 3345<br>new 28    | Number of beneficiaries from educational electronic platforms COVID-19  | 41066<br>(new 15) | Number of distributed equipment **                                    | 1203479        | total distributed posters, brochures, and flyers on covid19 prevention | 343<br>new 1)    | number of rpsions that have been disinfected       |

\* Includes: COVID-19 awareness sessions; awareness about the measures to take when returning to work and advanced training for field workers.

\*\* Includes: medical and sterilization equipment.

### Security services (Internal Security Forces, General Security, State Security, Army, General Directorate of Civil Defense)

- The army carried out patrols in different Lebanese regions to disperse gatherings and distributed food units (CIMIC)
- General Security Forces followed up on the airport's set regulations for the return of Lebanese expatriates to their homeland and tracked potential cases in various Lebanese regions and ensured that they're adhering to the terms of home isolation. forces also followed up on MoPH's randomly conducted PCR tests.
- ISF issued a number of fines:

| fines issued since March 8, 2020 |                                 | fines issued in the past 24 hours |               |
|----------------------------------|---------------------------------|-----------------------------------|---------------|
| 3520                             | institutions                    | 0                                 | institutions  |
| 13940                            | individuals                     | 0                                 | individuals   |
| 2795                             | medical masks since (2020/5/29) | 32                                | medical masks |
| <b>20254</b>                     | <b>total</b>                    | <b>32</b>                         | <b>total</b>  |

- State security forces followed up on suspected and positive cases and made sure they're adhering to the necessary precautions and isolation measures. forces also announced the names of municipalities in which the virus is spreading as a result of close contact between suspected cases. forces also aided the Ministry of Finance in monitoring bakeries and petrol stations.
- The General Directorate of Civil Defense prepared 427 personnel and 69 ambulances, to interfere, when necessary, and transport those infected with the emerging coronavirus. The directorate also carried out sterilization missions in public and private areas and in labs conducting PCR tests.

## Ministry of Interior and Municipalities

- Issued circular No. 58 on 20/6/2020 related to amending the opening and closing times of industrial and commercial establishments as well as opening all amusement parks and children's playgrounds, under the condition of adhering to the safety measures.
- Implemented the extension of the general mobilization procedures according to the decision of the Council of Ministers. the general mobilization extension begins on 8/6/2020 and will remain active until 5/7/2020.

## Ministry of Public Works

- the Ministry of Public Works and Transport and the General Directorate of Civil Aviation issued Circular No. 2/29 on 27/6/2020 to all airlines and ground services companies at Rafic Hariri International Airport on procedures for passengers arriving to Lebanon as of 7/2020.
- issued Circular No. 2/28 on 7/27/2020 including the list of the countries with approved PCR tests.
- Ministry of Public Works and Transport and the Directorate General of Civil Aviation, issued Circular No. 2/31 on 7/27/2020 to all passengers present at the Rafic Hariri International Airport in Beirut and all employees at the airport including the obligation to wear masks for the entire period of their presence at the airport and on the plane, and to abide by the measures of social distancing.

### Railways and joint transportation

#### Borders and Airport

-Transporting those arriving to Lebanon via Rafic Hariri International Airport or Syrian borders to the isolation centers in coordination with the Ministry of Public Health and security forces (25 buses)

| Flights arriving | Arrives from | Lebanese citizens on board | Arrival time |
|------------------|--------------|----------------------------|--------------|
| SKYLOUNGE        | cannes       | 3                          | 21:45        |
| SKYLOUNGE        | kiev         | 5                          | 15:00        |

**8**

| Flights departing | departs to | individuals on board | departing time |
|-------------------|------------|----------------------|----------------|
| MEA               | doha       | 1                    | 15:00          |
| EAS               | malibu     | 5                    | 14:00          |
| SKYLOUNGE         | paris      | 2                    | 10:00          |

**8**

| Port    | entered    |            |          | left       |           |          |
|---------|------------|------------|----------|------------|-----------|----------|
|         | Import     | Direction  | #        | export     | Direction | #        |
| tripoli | metal      | ukraine    | 1        |            |           |          |
| beirut  | livestock  | kartaja    | 1        | containers | lattakia  | 2        |
|         | containers | alexandria | 1        |            |           |          |
|         |            |            | <b>3</b> |            |           | <b>2</b> |